



# AAM PLATFORM SUPPLY VESSEL 6500

## DIMENSIONS

■ L.O.A	65.00 m
■ BREADTH MLD	16.00 m
■ DEPTH MLD	5.80 m
■ DRAUGHT MLD/MAX	4.20/4.90 m
■ CARGO DECK AREA	about 430 sqm
■ SPEED	12 knots
■ BULLARD PULL	55 to 60 (option)
■ RANGE	4500 n miles

## TANK CAPACITIES

■ FUEL OIL	500 m3
■ FRESH WATER	300 m3
■ WATER BALLAST/DRILL WATER	440 m3
■ LIQUID MUD (TOTAL) OPTION	350 m3
■ DRY BULK CEMENT	170 m3
■ L.O. STORAGE	6 m3
■ HYDRALUIC OIL	8 m3
■ FOAM	12 m3
■ DISPERSANT	12 m3
■ DWT	1600 t

## MACHINERY AND PROPULSION

■ MAIN ENGINE	2 X 2200 HP @750 RPM DAIHATSU TYPE 6DKM-26F(L)
■ GENSET	2 X 250 KW - VOLTAGE 415/230/3/50 HZ, MANUAL SYNCHRONISING
■ EMERGENCY GENERATOR	1 X 64 KW RADIATOR COOLED
■ PROPELLERS	2 X FIXED PITCH
■ BOW THRUSTERS	1 X 5 TONNE - FIXED PITCH ELECTRIC MOTOR DRIVEN
■ OILY WATER SEPARATOR	1 X 1 TONNE WITH ALARM
■ BRIDGE CONSOL FORWARD & AFT	MONITORING PANELS MAIN, AUX. BOW THRUSTER AND VESSEL'S NAVIGATION AIDS
■ MAIN ENGINE COOLERS	HEAR EXHANGER
■ LUB FUEL OIL PURIFIRES	OPTION 1 X MDO AND 1 X LUB OIL
■ WATER MAKER (RO)	1 X 5T OPTION
■ CENTRALISED MONITORING SYSTEM	OPTION
■ AIR CONDITION AND COLD ROOM PLANT- COLD STORE - 130 M3 AT -18C CHILLER - 10 M3 AT +4C	1 X HIGH PRESSURE TYPEFOR ACCOMODATION. SEPERATE UNIT W/HOUSE and ECR 1 X REFRIGERANT PLANT

## DECK EQUIPMENT (HYDRAULIC)

■ TOW/ANCHOR HANDLING WATER FALL WINCH	1 X OPTION
■ STORAGE DRUM WINCH	1 X OPTION
■ TUGGER WINCH (HYDRAULIC)	2 X 10 t PULL
■ CAPSTAN	2 X 10 t at 15 m/min
■ WINDLASS	1 X WINDLASS RATED 12 t at m/min
■ ANCHOR CHAINS	38 mm dia. U-2 STUD LINKS TO BE FINALIZED
■ ANCHORS	2 X 1580 KG
■ MOORING ROPES	4 X160 m PP ROPES
■ GUIDE PINS AND SHARK JAW	OPTION
■ PROVISION CRANE	2 t @ 21 m OPTION

## CARGO PUMPS AND FIRE FIGHTING FI FI 1

■ FUEL OIL CARGO PUMP	1 X 120 cu m at 70 m head
■ FW/DRILL WATER CARGO PUMP	1 X 120 cu m at 70 m head
■ EXTERNAL FIRE FIGHTING PUMP	2 X 450 TO 550 cu m at 14 bar
■ FIRE MONITORS	2 X 600 cu each one dual barrel water/foam to be finalized
■ FOAM SYSTEM	1 X OPTION
■ OIL DISPERSANT BOOMS	2 X OPTION
■ FIXED GAS DETECTION	H2S including Smoke and Heat Detectors

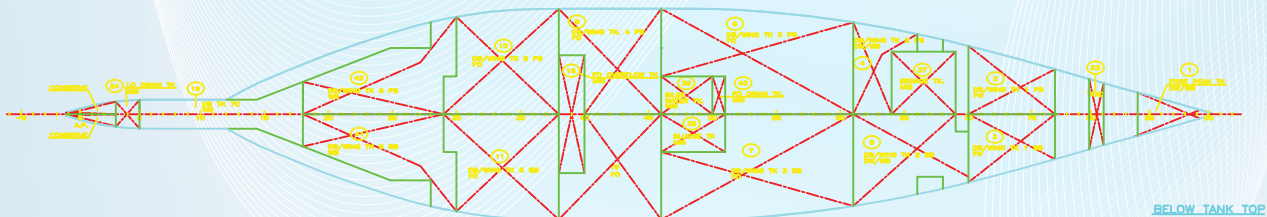
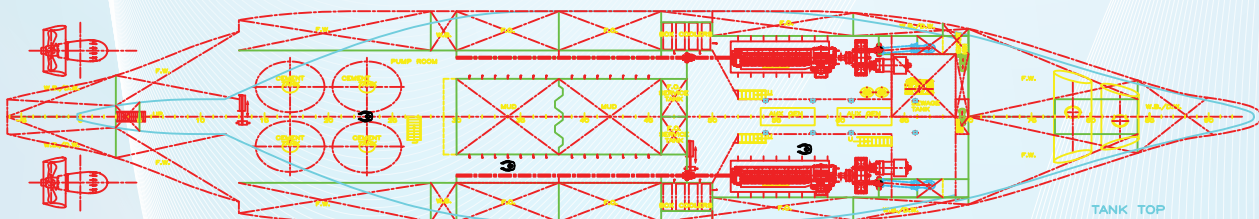
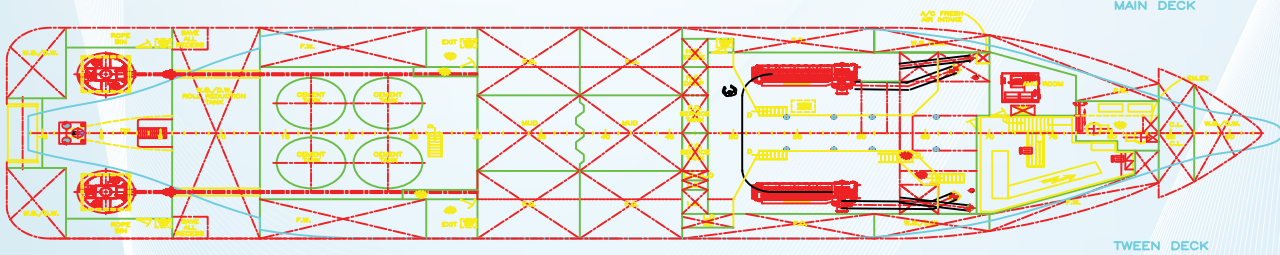
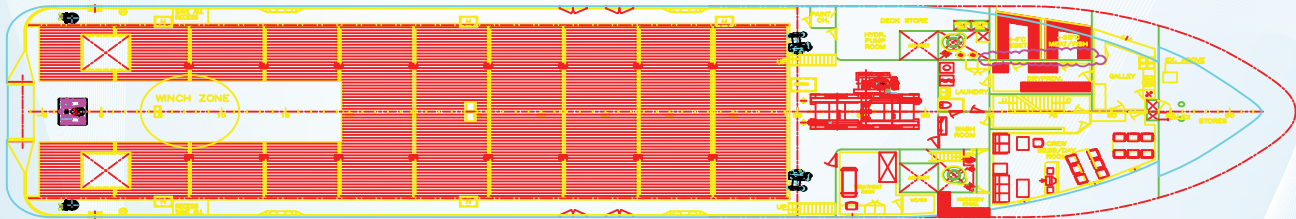
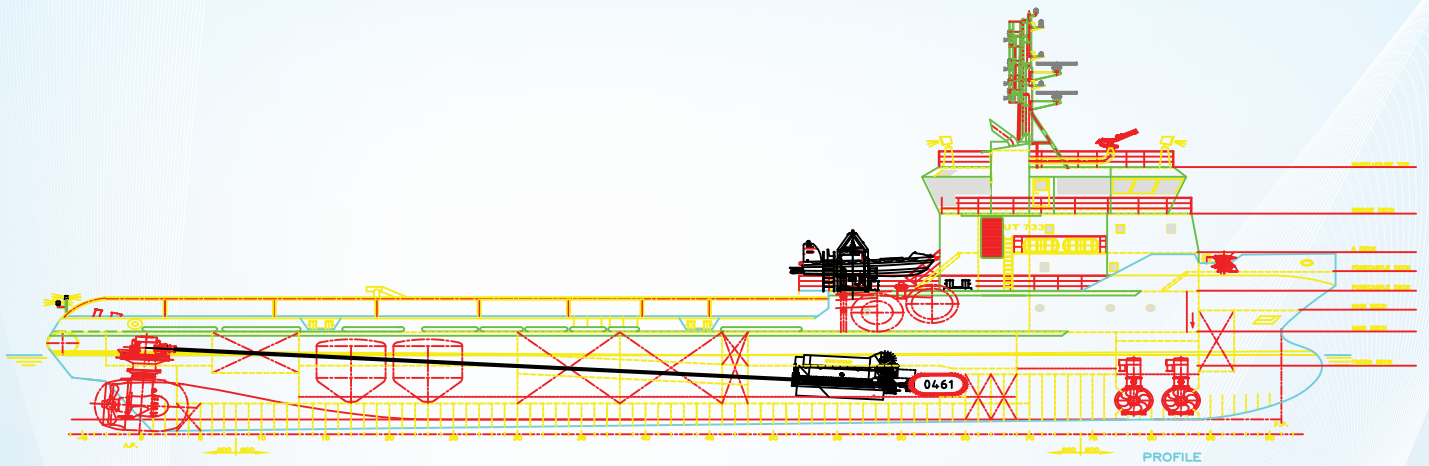
## ACCOMMODATION

■ CREW	28
■ SICKBAY	1 X SINGLE BERTH
■ LAUNDRY	2 WASHER AND 2 DRYER
■ MESS ROOM	16 PERSONS SEATING
■ RECREATION	COMMON

## NAVIGATION AIDS

■ RADAR	2
■ ECHO SOUNDER	1
■ BEARING REPEATERS	2
■ GPS	1 X MT
■ GYRO COMPASS	1 X with 2 repeaters
■ MAGNETIC COMPASS	1
■ AUTO PILOT	1
■ SPEED LOG	1
■ AIS	1
■ MF/HF DSC RADIO	1
■ IMC-C	2
■ VHF - DSC RADIO	2





## AAM PLATFORM SUPPLY VESSEL 6500



AAM MARINE CONSULTING SERVICES

Jacobus Spijkerdreef 196, 2132PZ  
Hoofddorp, The Netherlands

Tel/Fax: +31 (0)23 554 3710  
Mobile: +31 (0)6 2293 6746

info@aam-consulting.nl  
www.aam-consulting.nl